

Model 120

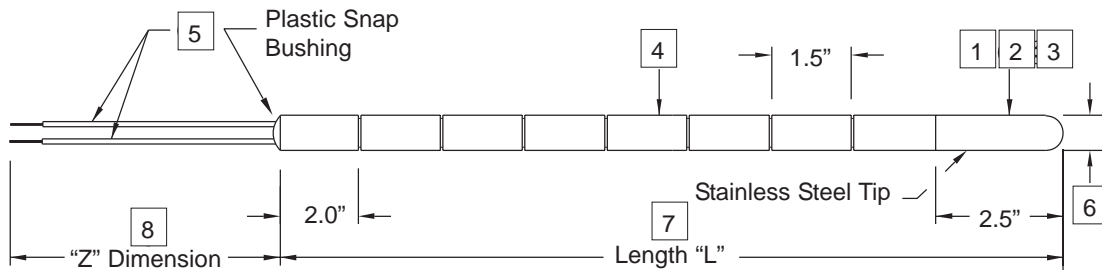
Hand-Breakable Thermocouple

U.S. Patent No: 5,674,009

Stocking Weed's patented "breakables" can reduce inventory and down time. No tools are required to break the sensor to the required length and fittings can be installed in a matter of minutes.



Model 120 is designed to be used with optional connection or spring loaded fittings.



Specifications:

1. Base Model	Base Model/Series Number.
2. A. Accuracy:	ANSI Special Limits of Error is standard. See Thermocouple General Specifications.
B. Type:	Application dependent. See Thermocouple General Specifications.
C. Response Time:	Dependent on sheath diameter and measuring junction. See Thermocouple General Specifications.
D. Tip Sensitivity:	Thermocouples are inherently tip sensitive.
3. Grounded:	At the tip, thermocouple wires are attached to inside of probe wall, resulting in quick response time.
Ungrounded:	At the tip, thermocouple wires are insulated from the inside of probe wall, results are a slower response time but increased isolation.
4. Construction:	Code A - 316SS tube construction, teflon insulated lead wire. Code F - 316SS MgO construction, fiberglass insulated lead wire.
5. Lead Wires:	<div style="display: flex; justify-content: space-around; align-items: center;"> <div style="text-align: center;"> <p>Single</p> </div> <div style="text-align: center;"> <p>Dual</p> </div> </div>
6. Sheath Diameter:	.250" (1/4") is industry standard.
7. Sheath Length:	Available in two lengths, scored to be breakable every 1 1/2 inches above 2 1/2 nominal tip.
8. Lead Wire Length:	Length of wires beyond the sheath.
9. Optional Fittings:	Sensor is not supplied with mounting hardware, specify optional fitting.

Model	Description		
120	Hand-Breakable Thermocouple		
1	Code	Thermocouple Type Range	
	J	Type J Thermocouple 32 to 1400°F (0 to 760°C)	
	K	Type K Thermocouple -328 to 2300°F (-200 to 1260°C)	
	T	Type T Thermocouple -328 to 700°F (-200 to 371°C)	
	E	Type E Thermocouple -328 to 1600°F (-200 to 871°C)	
	R	Type R Thermocouple 32 to 2700°F (0 to 1482°C)	
	S	Type S Thermocouple 32 to 2700°F (0 to 1482°C)	
	B N	Type B Thermocouple 32 to 3100°F (0 to 1704°C) Type N Thermocouple -454 to 2372°F (-270 to 1300°C) Add "MT" for matched to transmitter. See Thermocouple General Specifications.	
2	Code	Junction Type	
	G U	Grounded Ungrounded	
3	Code	Construction Temperature Limit	
	V	250° F Maximum	
4	Code	Number of Lead Wires	
	2 4	Single Thermocouple Dual Thermocouple	
5	Code	Sheath Diameter	
	C	.250" Diameter	
6	Code	Sheath Length	
	15 31 Other	15" (18" Overall) 31" (34" Overall) Consult Factory	
	Code	Lead Wire Length	
7	Z024	24" - Standard without head	
	8	Code	Optional Compression Fittings
C1S C2S C3S NS1		Compression: 1/4" Sheath x 1/8" NPT SS 1/4" Sheath x 1/4" NPT SS 1/4" Sheath x 1/2" NPT SS 1/4" Sheath x 1/2" NPT Hex Nipple	
FS5		Spring-Loaded: 1/4" Sheath 1/2" X 1/2" Hex Fitting with adjustable fluid seal	
310 Other		1/2" X 1/2" Hex Fitting Kit Consult Factory	
9			

120 - J - G - V - 2 - C - 15 - Z024 - NS1
- - - - - - - - - -

Sample Model Number
Your Model Number

